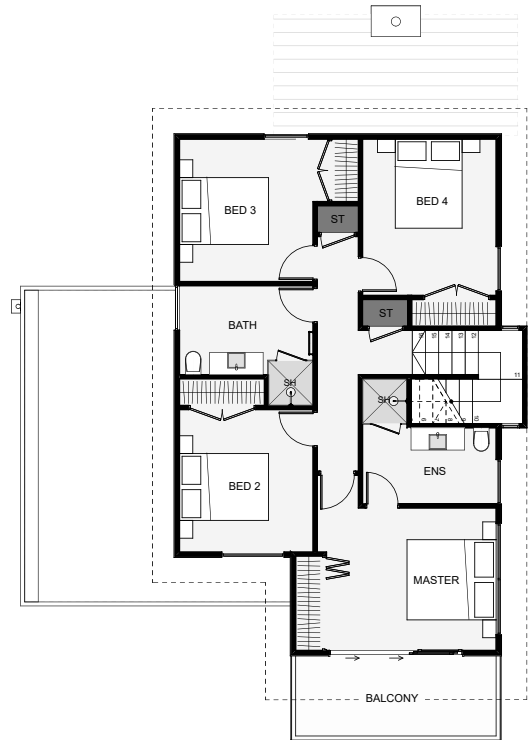
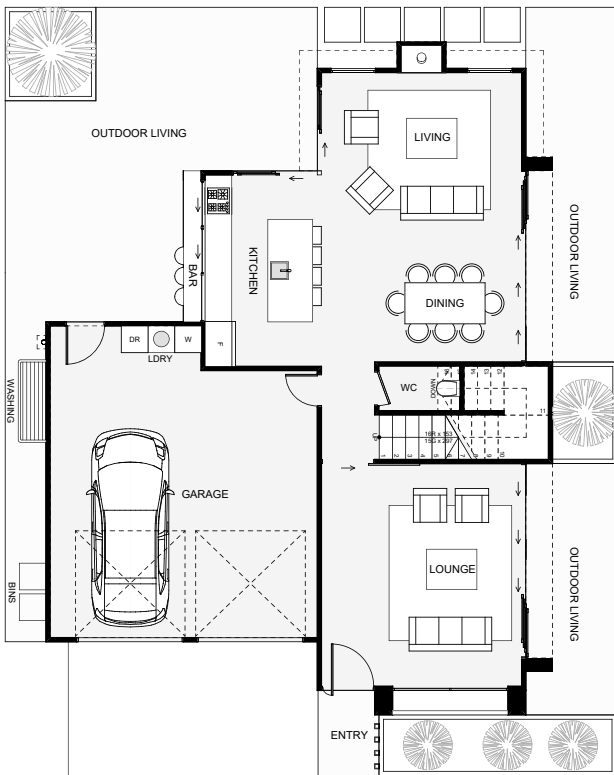




This modern, sleek four bedroom home packs a lot of features within its small footprint. The main living layout integrates seamlessly with dual outdoor living spaces which are designed around both morning and evening sun positions. Enjoy a view from the master balcony and its large slider door with overhead windows. This home looks great, is highly functional and could add a lot of value to your section!



Floor Area: 195m²

2
 4
 2+
 2
 11.4m
 15.1m

Contact us:

Ph: 021 1670 201

E: info@keenconstruction.co.nz

www.keenconstruction.co.nz

KEEN
CONSTRUCTION
AOTEAROA
YOUR LOCAL HIGH CALIBRE BUILDERS